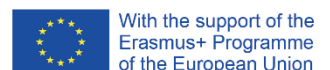




**SINReM**  
INTERNATIONAL MSc

# STUDENT HANDBOOK

2024-2026



## Contents

1.	About SINREM .....	3
2.	Programme participation cost .....	3
3.	Scholarships.....	4
4.	Organizational structure .....	4
4.1.	Management Board (MB) .....	4
4.2.	Programme Steering Committee (PSC) .....	4
4.3.	Coordination Secretariat.....	5
4.4.	Student Selection Committee (SSC).....	5
4.5.	Local Secretariats .....	5
4.6.	Student representation .....	5
5.	Teaching, learning, examination, student obligations and contract.....	5
6.	Student counselling, guidance and (medical) support.....	6
6.1.	Ghent University .....	6
6.2.	Uppsala University .....	6
6.3.	TU Freiberg .....	6
7.	Mobility scheme, academic calendar and class schedules .....	6
8.	Elective courses and curriculum .....	8
9.	Major.....	8
10.	Internship .....	10
11.	Thesis.....	11
12.	Grading systems .....	11
13.	Graduation .....	12
14.	Other administrative matter .....	12
14.1.	Visa and immigration.....	12
<b>14.2.</b>	<b>Bank account</b> .....	12
<b>14.3.</b>	<b>Insurance</b> .....	12
14.4.	Registration at the university .....	13
14.5.	Housing .....	13
14.6.	Getting around.....	14
15.	Student right of complaint and appeal .....	14
16.	People and contact .....	15

## 1. About SINREM

The increasing demand for raw materials, their price volatility, the production concentration and the market distortions imposed by some countries as well as environmental pollution and global change (e.g., CO<sub>2</sub> emissions, solid waste and wastewater production) confront Europe with a number of challenges along the entire raw materials value chain. To tackle the supply risk challenge, global change and environmental pollution problems, technological innovation is required with respect to exploration of new resources and sustainable primary mining, sustainable use of resources in materials and production processes (e.g., substitution of critical metals in materials), valorisation of secondary (alternative) resources and recovery/recycling of resources from end-of-life products.

Whereas environmental engineers currently mainly aim at reducing negative environmental impacts of end-of-life products and pollutants being released into the environment, material scientists mainly focus on improving the quality of materials using renewable and non-renewable resources. In turn, geologists and mining engineers are active in exploring new resources and optimizing extraction processes. These different types of professionals currently often act within their own specific domain, but not from a value chain perspective within a multidisciplinary context. Accordingly, they do not have a broader view on alternative techniques available to make the raw materials value chain more sustainable and tackle specific supply risk challenges.

The International Master of Science in Sustainable and Innovative Natural Resource Management (SINReM) educates students to develop sustainable solutions across the entire raw materials value chain. From resource exploration to sustainable extraction processes and the development of more sustainable materials and recycling, students are taught to find new solutions that work towards the achievement of a circular economy.

SINReM is offered by a consortium of 3 partner universities:

1. [Ghent University](#), Belgium (coordinating university)
2. [TU Bergakademie Freiberg](#), Germany
3. [Uppsala University](#), Sweden

Ghent University contributes through its leading expertise in the circular economy, environmental science and technology, recovery of resources from waste, and sustainability assessment. TU Bergakademie Freiberg offers its proficiency in sustainable and environmentally friendly extraction technologies. Uppsala University delivers extensive knowledge on the exploration of rare georesources. It also focuses on innovation management and entrepreneurship training.

The SINReM programme contains 120 ECTS credits, covers 2 years (4 semesters), and offers 5 elective majors. The full programme can be found [here](#).

## 2. Programme participation cost

The SINReM programme participation cost is 12,000 EUR per year for non-EU, non-EEA ([European Economic Area](#)) and non-Swiss students; and 6,000 EUR per year for EU, EEA and Swiss students. For Erasmus Mundus scholarship holders, the programme participation cost is paid directly from the scholarship, other students will receive an invoice, that needs to be paid before enrolment. The programme participation cost is partially waived to 2,000 EUR per year for AVSA scholarship holders from the EU, EEA and Switzerland. Non-EU, non-EEA and non-Swiss AVSA scholarship holders pay the full cost of 12,000 EUR for the first academic year and can apply for a partial tuition fee waiver down to 4,000 EUR for the second year to the SINReM Management Board.

In case you do not graduate (pass all courses, internship and thesis) by 10 September 2026, you will have to enroll for an extra semester and the earliest date to graduate will be February 2027. **To enroll to one or more extra semesters, a programme participation fee will be charged of 6,000 EUR per extra semester for non-EU, non-EEA and non-Swiss students and 3,000 EUR per extra semester for EU, EEA and Swiss students; this will also be charged to students who received an Erasmus Mundus scholarship.** (Partial) tuition fee waivers for extra semesters will only be granted by the SINReM Management Board in case your graduation delay is caused by force majeure (medical conditions, other issues beyond your control).

### 3. Scholarships

There are 2 types of scholarships available for SINReM students.

The **Erasmus Mundus scholarship** is a full scholarship that includes the programme participation cost, a monthly allowance and travel costs up to a total of 49,000 EUR for the full 2-year programme.

The student receives 1,000 EUR per month allowance as support for housing and general subsistence. European students do not receive this monthly allowance when staying in their home country. A further travel budget of up to 3,000 EUR per year (European students: 1,000 EUR per year) and an installation budget of 1,000 EUR (only for non-European students) at the start of the SINReM programme are also provided.

The **EIT AVSA scholarship** is a partial scholarships of 15,000 EUR in total for the full 2-year programme, paid to the students in installments of 1,500 euro per months from March 2025 until December 2025. The programme participation cost is not covered by the AVSA scholarship.

### 4. Organizational structure

The SINREEM programme is managed as described below.

#### 4.1. Management Board (MB)

The MB is the final responsible, in charge of the overall management of the programme, including the evaluation for academic admission of all applying students, the financial management, the quality assurance, individual lectures (e.g., content, relevance, quality of course material, effectiveness in training targeted skills, interaction with the professional sector, etc.), lecturers, composition of the programme, mobility schedules and issues (e.g. problems with examination and teaching schemes), and student facilities. The MB is assisted by the bodies as described below.

The MB meets at least 3 times per year and it has the following minimum composition:

- the chairperson of the MB, who is provided by the coordinating university
- 2 persons of each partner university who are responsible for the local management of SINReM
- other persons may be invited to assist to the meetings of the MB, if approved by the MB

#### 4.2. Programme Steering Committee (PSC)

The PSC consists of at least 2 academic staff members of each partner university, and at least 2 SINReM student representatives.

The PSC advises on modifications of the programme contents and monitors in accordance with legal and institutional regulations the courses in terms of success of delivery and marks achieved by students. The PSC checks, by means of a competences matrix, whether all the programme end competences are covered by the end competences of the individual courses. The PSC also advises on the conversion table, individual study programmes, selection of elective courses, thesis topics and nomination of lecturers. The PSC submits its advice to the partner universities (e.g., the local education commissions and faculty boards) for approval and also reports to the SINReM MB.

The PSC meets at least 3 times per year and more often if required by actual needs of the programme.

#### **4.3. Coordination Secretariat**

The Coordination Secretariat is hosted at the coordinating university, UGent. The Secretariat will treat all administrative questions and problems and will be in charge of practical issues, such as: arrival of students, mobility arrangements, collecting the marks of students, organisation of the selection procedure, overall organisation of thesis and internship activities, organisation of meetings of the managing bodies, communication, financial reporting and report writing. The Secretariat is further responsible for the design and the follow-up of the programme's website. This Secretariat will work under the guidance of the programme coordinator. See section 16 of this Student Handbook for the contact details of the Coordination Secretariat.

#### **4.4. Student Selection Committee (SSC)**

The SSC consists of at least 1 academic staff members of each partner university and is appointed by the SINReM MB to evaluate candidates for granting academic admission. Candidates will be granted academic admission when meeting the admission criteria as described on <https://sinrem.eu/admission-application/>.

The SSC also selects a number of candidates to nominate for a scholarship, depending on the availability of various scholarship types.

#### **4.5. Local Secretariats**

A Local Secretariat is hosted at each partner university and guides students to the respective departments and contact persons within the university. The Local Secretariats also assist students with housing, arrival, visa, registration, mobility arrangements, selection of elective courses, incorporation in the local student body, etc. See section 16 of this Student Handbook for the contact details of the Local Secretariats.

#### **4.6. Student representation**

Since it is important that students are represented when important decisions on SINReM are made, at least 2 student representatives are member of the Programme Steering Committee. The SINReM student representatives are elected at the beginning of each academic year. The student representatives are also the 'gate' through which the SINReM management communicates with the students and vice versa. Also a student representative is elected to act as the 'gate' through which EIT Raw Materials Academy communicates with the students and vice versa.

At the end of every academic year, student surveys on the SINReM programme are taken and results are discussed during a Programme Steering Committee meeting, in order to monitor the quality and improve the programme where necessary.

## **5. Teaching, learning, examination, student obligations and contract**

The Education and Examination Codes of the partners can be found below. The educational and examination code is applied of the university where you take the concerned courses and exams.

The partner university's rules and regulations:

- [Ghent University](#)
- [Uppsala University](#)
- [TU Freiberg](#)

**All [regulations concerning study progress monitoring and binding conditions](#) apply to all SINReM students during the complete SINReM programme.**

SINREM students as well as the programme management have mutual rights and obligations formalized in the SINReM Student Agreement to be signed before the start of the programme.

## 6. Student counselling, guidance and (medical) support

### 6.1. Ghent University

All info on the Ghent University student medical services can be found on

<https://www.ugent.be/student/en/study-support/medical>

Find all info about Ghent University's student support services on

<https://www.ugent.be/student/en/study-support/feelinggood>

The Learning Track Counsellor of Ghent University's Faculty of Bioscience Engineering [Isabelle Vantornhout](#) can be contacted for questions related to your SINReM curriculum and learning track.

Do you want to follow a language course at Ghent University? <https://uct.ugent.be/en>

The [SINReM Coordinator](#), is always willing to listen to you and to find suitable solutions for your issues or requests.

### 6.2. Uppsala University

All info on the Uppsala University student medical services can be found on

<https://www2.uu.se/en/students/support-and-services/the-student-health-services>

Questions about your studies and student life can always be addressed to [studycounsellor@geo.uu.se](mailto:studycounsellor@geo.uu.se) or the Academic Coordinator [Abigail Barker](#).

All info on Uppsala University career counselling can be found on <https://www2.uu.se/en/students/careers>

### 6.3. TU Freiberg

You can find information on medical help and support in Freiberg under the OPAL course of your cohort.

The SINReM team in Freiberg, [Gero Frisch](#) and [Ines Aubel](#), is willing to listen to you and to find suitable solutions for your issues or requests.

Answers to general questions from international students can generally be found via the [International Center](#) in Freiberg. If you have any further questions or need help, please contact [Ines Aubel](#).

Also questions concerning your SINReM curriculum and learning track at TU Freiberg can also be addressed to [Ines Aubel](#).

## 7. Mobility scheme, academic calendar and class schedules

The full SINReM programme can be found [here](#).

Further information on academic calendars can be found here:

- [Ghent University calendar](#)
- [Uppsala University calendar](#)
- [TU Freiberg calendar](#)

The detailed class schedule for the first semester courses at Ghent University will appear [here](#) from mid-July 2024 onwards.

Note that in [oasis.ugent.be](https://oasis.ugent.be) you are able to find your personal agenda containing classes for your registered courses. Your class schedules for TU Freiberg and Uppsala University will be communicated locally.

Year	Semester	Start date	End date	Mobility and courses	
1	1	01/09/2024	06/09/2024	<b>Ghent University</b> Arrival, CheckIn, OnBoarding SINReM Kick Off Event on 04/09/2024	
		09/09/2024	27/09/2024	<b>TU Freiberg</b> Chemical Principles and Sustainable Technologies along the Raw Materials Value Chain (part I)	
		30/09/2024	20/12/2024	<b>Ghent University</b> Introduction to the Circular Economy, Economics and Management of Natural Resources Clean Technology Sustainable Development and Multicriteria Decision-making Rational Use of Materials Resource Recovery and Recycling Technologies	
		23/12/2024	02/01/2025	<b>Christmas holidays</b>	
	03/01/2025	10/01/2025	<b>Ghent University</b> Exams		
	2		13/01/2025	31/05/2025	<b>Uppsala University</b> Mineral Exploration Innovation Management and Entrepreneurship One of the elective courses below: Environmental Assessment Physical–Chemical Properties of Rocks, Minerals and Materials African Mineral Resources: the Science and Politics of Sustainable Extraction of Mineral Resources Geological Field Work Project including exams
			June 2025 dates to be confirmed	July 2025 dates to be confirmed	<b>TU Freiberg</b> Chemical Principles and Sustainable Technologies along the Raw Materials Value Chain (part II)
	2	3	Subject to choice	Subject to choice	<b>TU Freiberg (Online)</b> Financial and Sustainability Reporting, Financial Planning and Business Valuation <b>Elective major</b> Resource Recovery and Sustainable Materials (UGent: start end September 2025) Circular Societies (UGent: start end September 2025) Sustainable Processes (TU Freiberg: start begin October 2025) Georesource Exploration (Uppsala University: start end August 2025) Sustainable Entrepreneurship (Uppsala University: start end August 2025)
4		Subject to choice	Subject to choice	Master Thesis Internship	

## 8. Elective courses and curriculum

Your curriculum for the 1<sup>st</sup> SINReM year needs to be registered and submitted in oasis.ugent.be by October 1<sup>st</sup> 2024. This fixed curriculum contains 55 ECTS credits and you will need to select one elective course of 5 ECTS credits for the second semester at Uppsala University. You will receive further instructions on how to select your curriculum by email from the Study Track Counsellor.

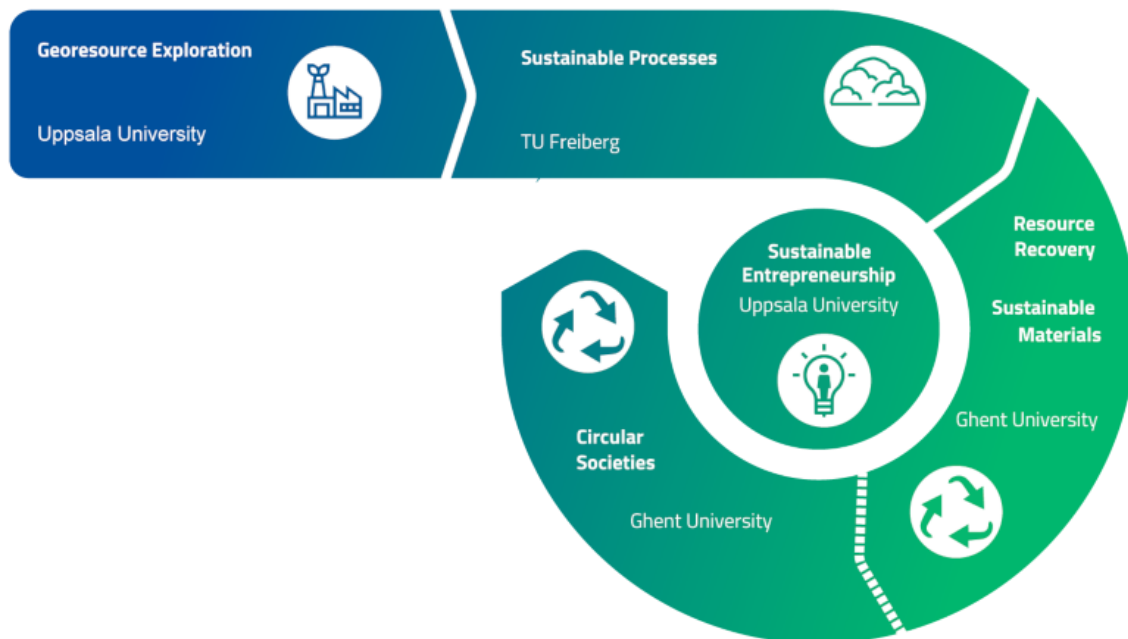
Your curriculum for the 2<sup>nd</sup> SINReM year containing your elective major courses needs to be registered and submitted in oasis.ugent.be by October 1<sup>st</sup> 2025.

**Remember that during your 2-year SINReM programme your curriculum submitted in oasis.ugent.be is the one and only valid curriculum. Never register for different courses at TU Freiberg or Uppsala University than the courses in your Oasis curriculum. In case you have questions on your curriculum, contact [sinrem@ugent.be](mailto:sinrem@ugent.be).**

**Remember that you have to re-enroll at Ghent University via oasis.ugent.be for your second year even if you do not follow courses at Ghent University during your second year.**

## 9. Major

For the second SINReM year, you will have to choose one of the five elective majors. The final choice of major needs to be submitted by **April 15<sup>th</sup> during the first year** via the major approval form that will be provided on Ufora.



The major **Georesource exploration** offered at **Uppsala University** focuses on geological, geochemical or geophysical exploration, including mineralogy, critical minerals and metals. Other aspects involve management of primary resources (mines and exploration sites), urban mining and mineral supply, environmental aspects of mining and environmental baselines for potential mine sites as well as sustainable development issues related to mines and mining. The major involves cutting-edge research in the areas of geophysical and mineralogical-geochemical exploration of mineral deposits. Uppsala University has expertise in mineralogy, petrology and geochemistry applied to mineralization and ore deposits as well as mine waste for critical elements.



The major **Sustainable entrepreneurship** offered at **Uppsala University** offers teaching and training to become entrepreneurs and to understand the essence of sustainable business development in general as well as in established companies. Teaching is organized as joint classes with students from Entrepreneurship School and Master in Industrial Leadership and Innovation with three courses, the first one, Technology-Based Entrepreneurship, covers analysis of business opportunities as well as start-up and operation of entrepreneurial processes based on new technical knowledge and new technical capabilities. The second course, Organising Knowledge-Intensive Work, focuses on conceptual frameworks and experience-based approaches within the organisational field, and evaluate their relevance for understanding knowledge-intensive work. The third course, Technology-Based Business Models for Circularity covers business models and their fundamental components, including analysis of current circular business models used in different technology-intensive industries. The students work on group assignments designed to illustrate critical sustainability challenges in the raw materials industry.

The major **Sustainable processes** offered at **TU Freiberg** focuses on the different stages of the metals and minerals processing pathway: from the exploration of new deposits, over the development of alternative energy technologies and materials, to the recycling and management of resources. TU Freiberg is the only European university that operates their own underground research and teaching mine.

Students have the opportunity to work with various processing technologies along the entire metals and mineral value chain, both in their master thesis and in taught courses. At the department of Mineral Processing Machines comminution and the sorting of raw materials can be studied. Due to the large number of industrial partners, experimental investigations using full size industrial machines is possible for students. In the Chemical Technology, Inorganic Chemistry and Biology departments, (bio-)hydrometallurgical mineral leaching and recycling methods are being developed to extract strategically important metals from primary sources or secondary raw materials, such as tailings and electronic waste. This research has resulted in two start-up companies in recent years. The treatment of aqueous process streams can be studied in the department of Process Engineering. Amongst other topics, research focuses on selective separation of strategically important elements from polymetallic streams using membrane techniques. The Non-ferrous Metallurgy department focusses on the development of electro-winning and refining procedures as well as pyrometallurgical methods on both the lab and pilot plant scale.

Taught courses are mostly lab-based and give students a hands-on experience with processing technologies from lab to demonstrator scale.

In the major **Resource recovery and sustainable materials** offered at **Ghent University**, students focus on the application and development of resource recovery and recycling technologies and the development of more sustainable materials, e.g., by using waste as a resource or by substituting less sustainable materials components, so that natural resources are not depleted or permanently damaged. Focus is mainly laid on metals and mineral resources, although technologies for water reuse, recycling of plastics and carbon capture and utilization can also be in the scope, particularly if new technologies developed in these domains may help to make the raw materials value chain more sustainable. Accordingly, the sustainability of new materials and technologies is also assessed through e.g. life cycle assessment tools.

The mandatory course in this major gives students insights in (factors affecting) the sustainable management of resources in the circular economy (including e.g. industrial symbiosis), whereas a first list of elective courses, include courses on waste(water) treatment, sustainable materials (e.g., composites), waste management, resource recovery and recycling technologies. A second list of elective courses offers the students a wide range of tools that may aid in the development of these new technologies and materials (e.g. extraction and separation technologies, control and process engineering, life cycle and environmental impact assessment).

The major **Circular societies** offered at **Ghent University** focuses on re-engineering the value chain, designing sustainable processes, systems and new business models for evolving towards a circular society. Therefore, data on e.g. flows of materials within the society are collected, analyzed, and processed, and the sustainability of these novel processes and systems is assessed. Prevention of waste generation is targeted, and generated wastes are explored as potential new resources. These activities create symbiosis between different stakeholders and actors in the value chain. Particular attention goes to the management of societal changes, aligned with the sustainable development goals. The city of Ghent acts as central case in this major.

Mandatory courses in this major deal with sustainable management of resources in the circular economy (including e.g. industrial symbiosis) and the design of sustainable circular cities. Elective courses focus on sustainable development, sustainable waste(water) management, and the organization of circular societies, including transport and logistics, sustainable mobility and sustainable energy production. The latter are not only essential for evolving towards a sustainable society, but also increase the need for critical metals and raw materials in the society.

## 10. Internship

The internship (or Training in Industry) must be done at a non-academic company or institution. A list of companies/institutions offering internship places to SINReM students will be provided on OPAL, the digital learning platform of TU Freiberg. We strongly encourage students to find a company/institution themselves via personal contacts or the EIT Raw Materials network (or networking event). The work done during your internship needs to be within the scope of SINReM. You will receive instructions on how to find and arrange your internship after you have chosen your elective major in May during your first SINReM year. **Do not start contacting internship places before you have received these instructions.**

The internship must be equal to (or more than) five full time working weeks (or a part time equivalent). This may be done part-time to fit the class schedule. Student have to plan the internship together with the internship provider based on (tentative) class schedules. Consult the mobility schedule to find the best time for your internship together with your major choice (and therefore the specific starting and ending dates of the semesters at your 2<sup>nd</sup> year university of choice).

During communication with the academic and non-academic supervisors, please remain professional and courteous, and remember you are representatives of the SINReM programme. Respond to e-mails timely and be patient if the company does not reply right away. Even if the internship proposal cannot be agreed on, please close the conversation politely. Inform the internship provider timely in case you have decided to do your internship elsewhere.

Finalize the internship selection procedure by proposing the internship approval form provided on OPAL to the SINReM Management Board minimum 2 weeks before the intended start of the internship. Approval will be given by the SINReM Management Board. Also an Internship Contract has to be signed by the student, the internship provider and Ghent University, representing the SINReM Consortium. Further instructions on the internship procedure (report, blog, evaluation) will be provided on OPAL.

The academic supervisor for internships of students following a major at TU Freiberg will be prof. Gijs Du Laing. The academic supervisor for internships of students following a major at Ghent University or Uppsala University will be prof. Gero Frisch.

## 11. Thesis

During the second part of your first year or during the first weeks of your second year, you will choose your master thesis topic. Every partner university has its own procedure of choosing the topic. Approval forms and instructions per partner university will be provided on Ufora, the digital learning platform of Ghent University.

Further instructions on the thesis procedure (deadlines, thesis manuscript submission, defence, evaluation) will be provided via the thesis host university.

The master thesis work should be supervised by an academic supervisor affiliated with the partner university where you follow your major.

The master thesis has to be defended at the host university (of the main academic supervisor), in agreement with local institutional regulations. Each university offers the possibility for defence at least once per academic year.

## 12. Grading systems

All universities use a different grading system. During your examination your grade might be communicated in the local system. Your official Ghent University transcript of records will always show your grades in the Ghent University grading system (0-20 scale).

Grades for every semester can be consulted on [oasis.ugent.be](http://oasis.ugent.be) at the end of every UGent semester. Below you can see how the grades will be converted to the UGent system.

Ghent University 0-20	Uppsala University 0-5	TU Freiberg 5-1	Appreciation
20		1	Very good
19		1,1	
18	5	1,2 - 1,4	
17		1,5 - 1,6	Good
16		1,7 - 1,9	
15	4	2,0 - 2,4	
14		2,5 - 2,9	Satisfactory
13		3,0 - 3,3	
12	3	3,4 - 3,5	
11		3,6 - 3,9	Sufficient
10		4	
below 10	below 3	above 4	Fail

### 13. Graduation

SINReM students have **two opportunities to graduate** at the end of the second year: in the beginning of **July 2026** or mid-**September 2026**, based on the Ghent University academic calendar.

In order to graduate in July, all exam, internship and thesis grades should have been sent by the Local Secretariats at TU Freiberg and Uppsala University to Ghent University by the end of June 2026.

In order to graduate in September, all exam, internship and thesis grades should have been sent by the Local Secretariats at TU Freiberg and Uppsala University to Ghent University by the beginning of September 2026.

The exact deadlines for grade submission will be communicated later. **Please make proper agreements with your thesis supervisors at TU Freiberg and Uppsala University in order to meet these deadlines.**

In case you do not graduate by the deadlines mentioned above, you will have to enroll for an extra semester and a programme participation cost will be charged (see section 2 of this Student Handbook).

### 14. Other administrative matter

Please subscribe to the **infosite International Training Centre FBE on Ufora** in order to stay informed about all practical and administrative matter for international students studying at the Faculty of Bioscience Engineering of Ghent University.

#### 14.1. Visa and immigration

All instructions on how to obtain your visa and 2-year Belgian residence permit can be found in the general PreDeparture information.

The Local Secretariat of Uppsala University will send you information on how to apply for your Swedish residence permit. **Please note that you should apply for the Swedish residence permit at least one month before you travel to Uppsala mid-January 2025.**

For non-EU students who go to Freiberg for their 2<sup>nd</sup> year. A residence permit needs to be applied for at the [Immigration Authority](#). The Local Secretariat (Ines Aubel) will organize a group appointment for the SINReM students to start the formal procedure.

#### 14.2. Bank account

All students are required to have a personal bank account at a European bank. Scholarship holders will receive their scholarship on that account.

#### 14.3. Insurance

You will be subscribed to the [all-in insurance policy](#) for foreign students of Ghent University for the full length (24 months) of the SINReM programme, handled by insurance broker Expat&Co, and backed by insurance company Inter Partner Assistance (IPA). The all-in insurance cost is included in the participation cost which is covered by the scholarship. The all-in insurance covers medical costs, travel risks, as well as civil liability.

Your insurance certificate is sent to you by e-mail. This is your proof of insurance and contains all instructions to file a claim for reimbursement. You are insured in every country you stay for the SINReM programme.

Next to the Expat&Co all-in insurance, you should subscribe to a compulsory Belgian National Health Care insurance (called 'mutualiteit' in Dutch). This insurance pays (partially) the regular costs like visiting a dentist, a doctor, pharmaceutical products, vaccines, a stay in the hospital etc. This insurance is offered by a state company (HZIV) or several private companies (CM, Partena, OZ, Bond Moyson, Liberale Mutualiteit, VNZ etc).

If you are a national of one of the 27 EU countries, Iceland, Liechtenstein, Norway or Switzerland, you should apply for a European Health Insurance Card (EHIC) at your current health insurer prior to your travel to Belgium. During your master programme at Ghent University, you should keep your registration with your current insurer to avoid having to register to a Belgian health insurance. It is recommended to notify your health insurance institution in your country of origin of your intention to go to and study in Belgium.

#### **14.4. Registration at the university**

##### **Ghent University**

You will be enrolled at Ghent University during your complete 2-year SINReM programme. SINReM students are welcomed at Ghent University, together with all international students of the Faculty of Bioscience Engineering, during the TakeOff programme.

##### **Uppsala University**

The Local Secretariat at Uppsala University will register all SINReM students at Uppsala University. You will receive further instructions by e-mail. You will be included in the welcome activities together with the exchange students.

##### **TU Freiberg**

The Local Secretariat at TU Freiberg will register all SINReM students at TU Freiberg. You will receive further instructions by e-mail.

#### **14.5. Housing**

Plan your accommodation well as you will be moving as a cohort, on dates sometimes fairly incompatible with renting contracts. Try to leave as few overlap as possible so you do not have to pay rent for two accommodations at once.

##### **First semester at Ghent University**

All students can apply for a room at one of the student residences of Ghent University. Apply for a room before your arrival. More information (pricing and applying for a room) can be found on <https://www.ugent.be/en/facilities/housing/erasmusmundusapplication>

Contact the housing department of Ghent University via [huisvesting@ugent.be](mailto:huisvesting@ugent.be)

It is also possible to rent a room on the private market.

It is important to rent the room only from the beginning of September 2024 until mid-January 2025 as you will move to Uppsala, Sweden around mid-January.

##### **Problems and Innovations in the Process Chain of Mineral Resources at TU Freiberg**

This course will take place in Freiberg, Germany from 9 September – 27 September 2024. Group transportation by bus and accommodation in Freiberg will be arranged and paid by the SINReM programme.

##### **Second semester at Uppsala University**

Uppsala University only offers housing to non-EU students (regardless of scholarship). EU students will receive adequate information from the local office during the first semester. Information and pricing can be found on <http://housingoffice.se/applying/>

### **Resource Chemistry course at TU Freiberg**

This course will take place in Freiberg, Germany from June-July 2024. The exact dates will be communicated later. TU Freiberg offers dormitories for all students. All information concerning housing in Freiberg can be found [here](#).

### **Other semesters**

Housing can be arranged by yourself with the above information.

#### **14.6. Getting around**

##### **Ghent**

Mobility within Ghent can be done by bike, walking or by public transport. Ghent is a fairly compact historic city where everything is within reasonable walking distance.

Nevertheless, it is best to rent a bike or buy a secondhand bike. A secondhand bike costs about 80-120€. Info on rental bikes can be found on <https://fietsambassade.gent.be/en>

##### **Freiberg**

For the Resources Chemistry course in July. The team in Freiberg will help to arrange bikes. It is possible to rent a bicycle at CJD Sachsen (Address: Himmelfahrtsgasse 20, 09599 Freiberg). Contact persons are Mrs. Braun and Mr. Wolf, Tel. 03731-798 4886, E-Mail: [fah@cjd-sachsen.de](mailto:fah@cjd-sachsen.de). Renting a bike there has to be arranged beforehand.

You can also buy or repair (second-hand) bikes at “Buntes Haus” (Tschaikowskistr. 57a, 09599 Freiberg). Contact information: +49 3731-201399, mail: [bunteshaus@cjd-sachsen.de](mailto:bunteshaus@cjd-sachsen.de)

##### **Uppsala**

No bike renting services are available, the local office advises to buy a bike on second hand bike markets. Bikes can be found on various facebook buy/sell groups or [www.blocket.se](http://www.blocket.se).

### **15. Student right of complaint and appeal**

Students have the right of complaint and appeal. These are described in an education and exam code specific to each partner university for the courses taken at that university. Please notify the SINReM Coordination Secretariat at [sinrem@ugent.be](mailto:sinrem@ugent.be).

## 16. People and contact

If you have SINReM-specific questions on the programme, elective courses, majors, internships, master thesis, mobility to and from Ghent, Uppsala or Freiberg, etc, contact the Coordination Secretariat via [sinrem@ugent.be](mailto:sinrem@ugent.be)

If you have general questions on your stay in Ghent, insurances, visa, residence permits, bicycle rent, etc, contact [students.itc@ugent.be](mailto:students.itc@ugent.be)

### Administrative programme coordinator

#### Coordination Secretariat

International training Centre, Faculty of Bioscience Engineering

Coupure Links 653, 9000 Ghent

Tel: +32 264 60 23

[sinrem@ugent.be](mailto:sinrem@ugent.be)

#### TU Freiberg Local Secretariat

Ines Aubel

Leipziger Straße 29, Zimmer WIN 67

Tel: +49 3731 39-3663

[ines.aubel@chemie.tu-freiberg.de](mailto:ines.aubel@chemie.tu-freiberg.de)



#### Uppsala University Local Secretariat

Linda Lagebro

Geocentrum

Villavägen 16

752 36 Uppsala

Tel: +46 18 471 25 07

[studycounsellor@geo.uu.se](mailto:studycounsellor@geo.uu.se)



**Academic Programme Director**

**Chairman SINReM Management Board**

Prof. dr. ir. Gijs Du Laing

Coupure Links 653, 9000 Ghent

[gijs.dulaing@ugent.be](mailto:gijs.dulaing@ugent.be)



**Academic Programme Coordinator TU Freiberg**

**Member SINReM Management Board**

Prof. dr. Gero Frisch

Clemens Winkler Building, Leipziger Straße 29, Freiberg

[frisch@tu-freiberg.de](mailto:frisch@tu-freiberg.de)



**Academic Programme Coordinator Uppsala University**

**Member SINReM Management Board**

Prof. dr. Abigail Barker

Geocentrum, Villavägen 16, 752 36 Uppsala

[abigail.barker@geo.uu.se](mailto:abigail.barker@geo.uu.se)



Don't hesitate to join the [SINReM Community Facebook Group!](#)

Don't hesitate to connect with the [SINReM LinkedIn Group!](#)

Don't hesitate to become a member of the [Erasmus Mundus Association \(EMA\)](#), an association for students and alumni of Erasmus Mundus Master and Doctoral programmes.



With the support of the  
Erasmus+ Programme  
of the European Union

Don't hesitate to stay in touch with the [EIT RawMaterials Alumni](#).



**RawMaterials**  
Connecting matters



European Institute of  
Innovation & Technology